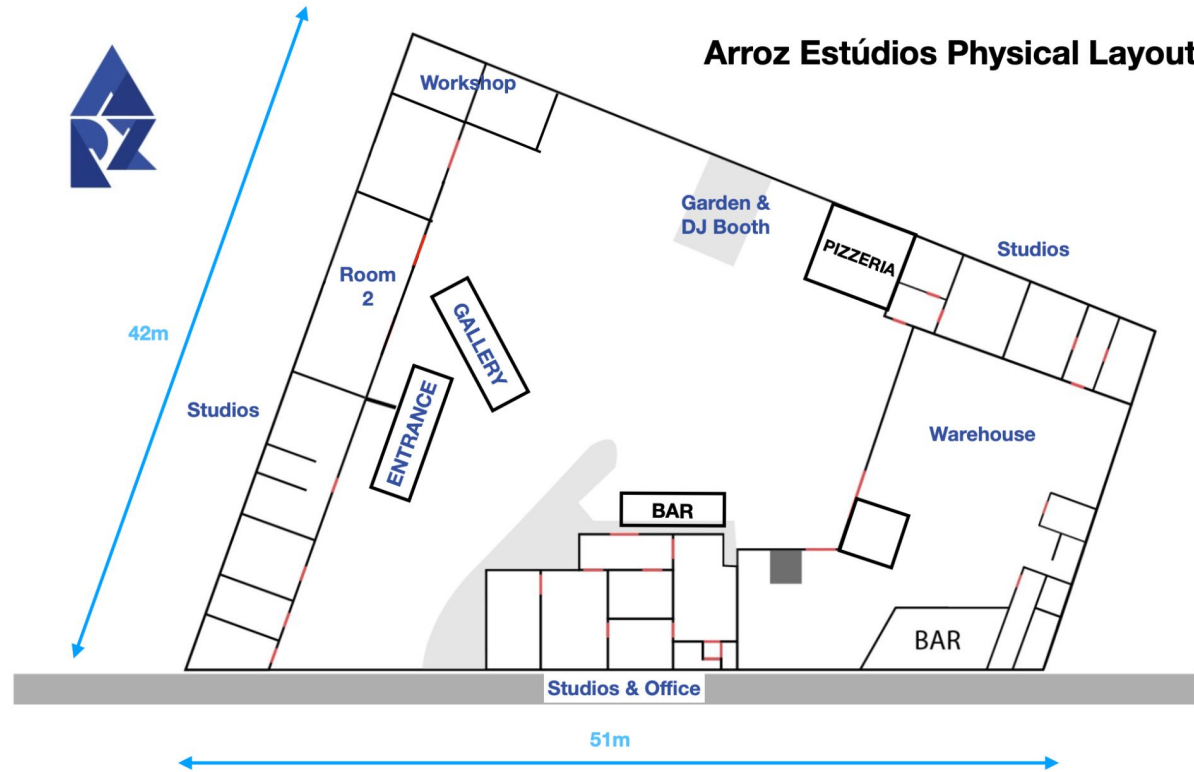
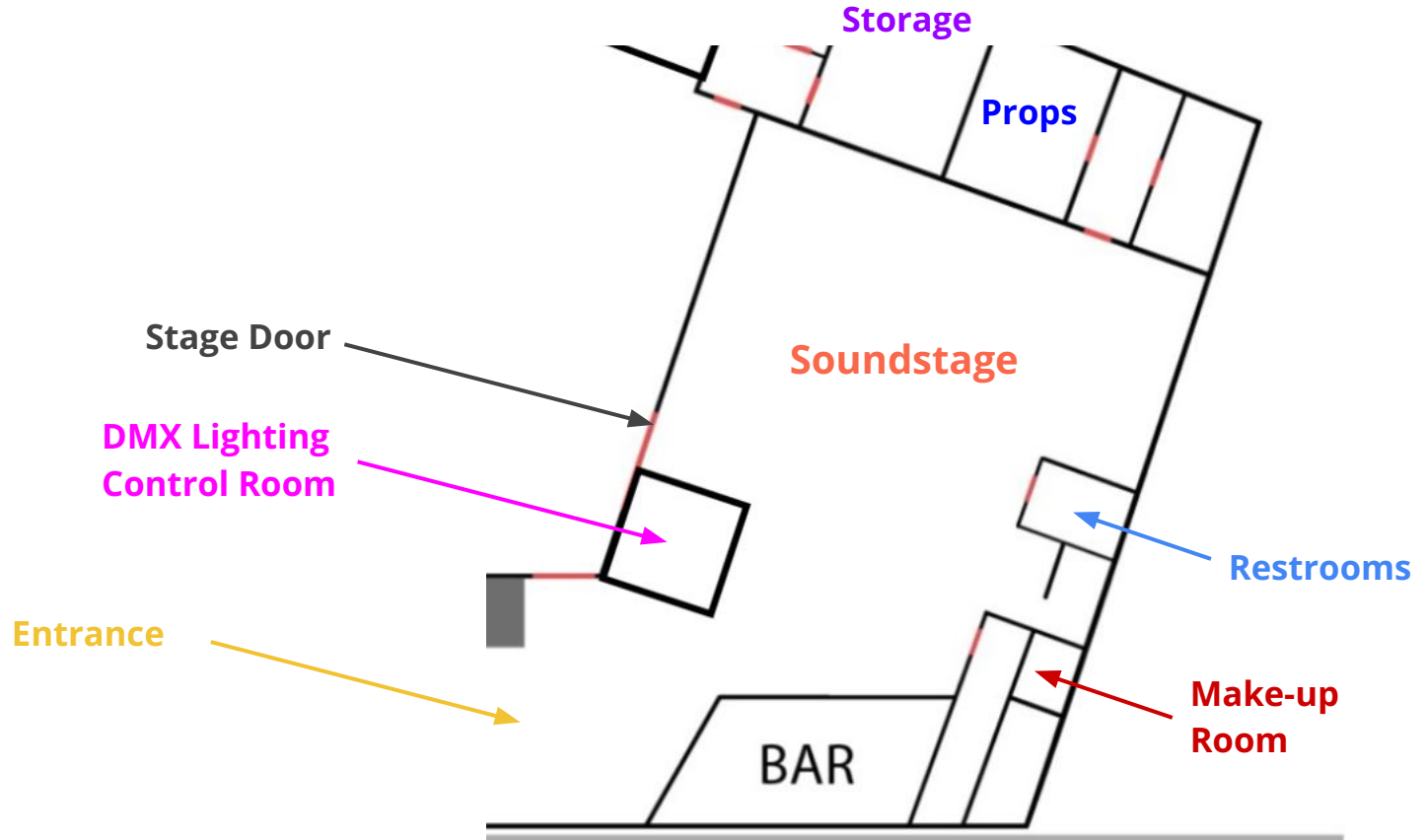


Facilities (Studio Features)

- Sound Stage (dimentions)
- Vehicle acces
- Lighting Grid
- Lounge/Production Area
- Set Design Workshop
- Storage room
- Office Space
- Kettering/Bar
- Hair/Make-up room
- Secure Free Parking



Soundstage Plan (Features)



Soundstage Dimensions (Top View)

Stage

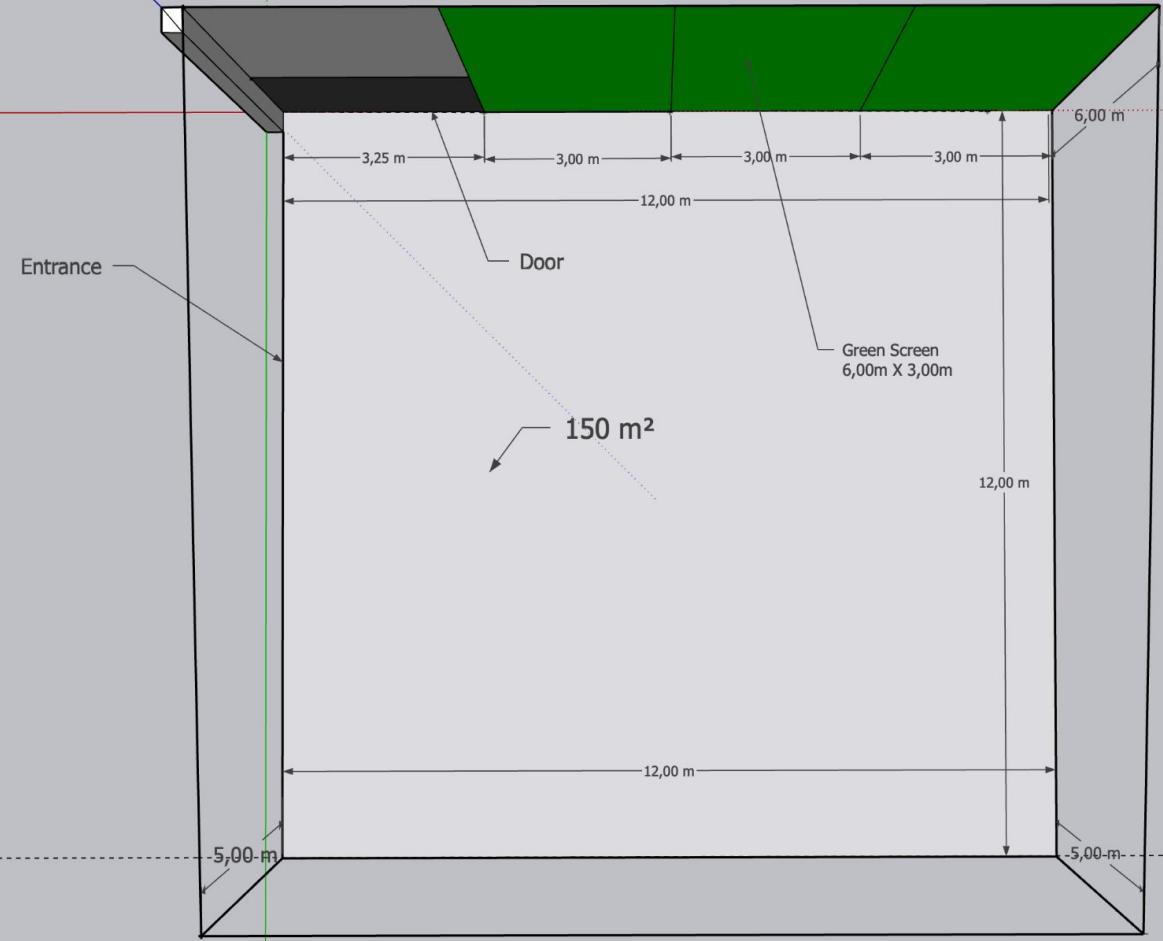
- Usable space 150m²
- Height - 6,00m

Door

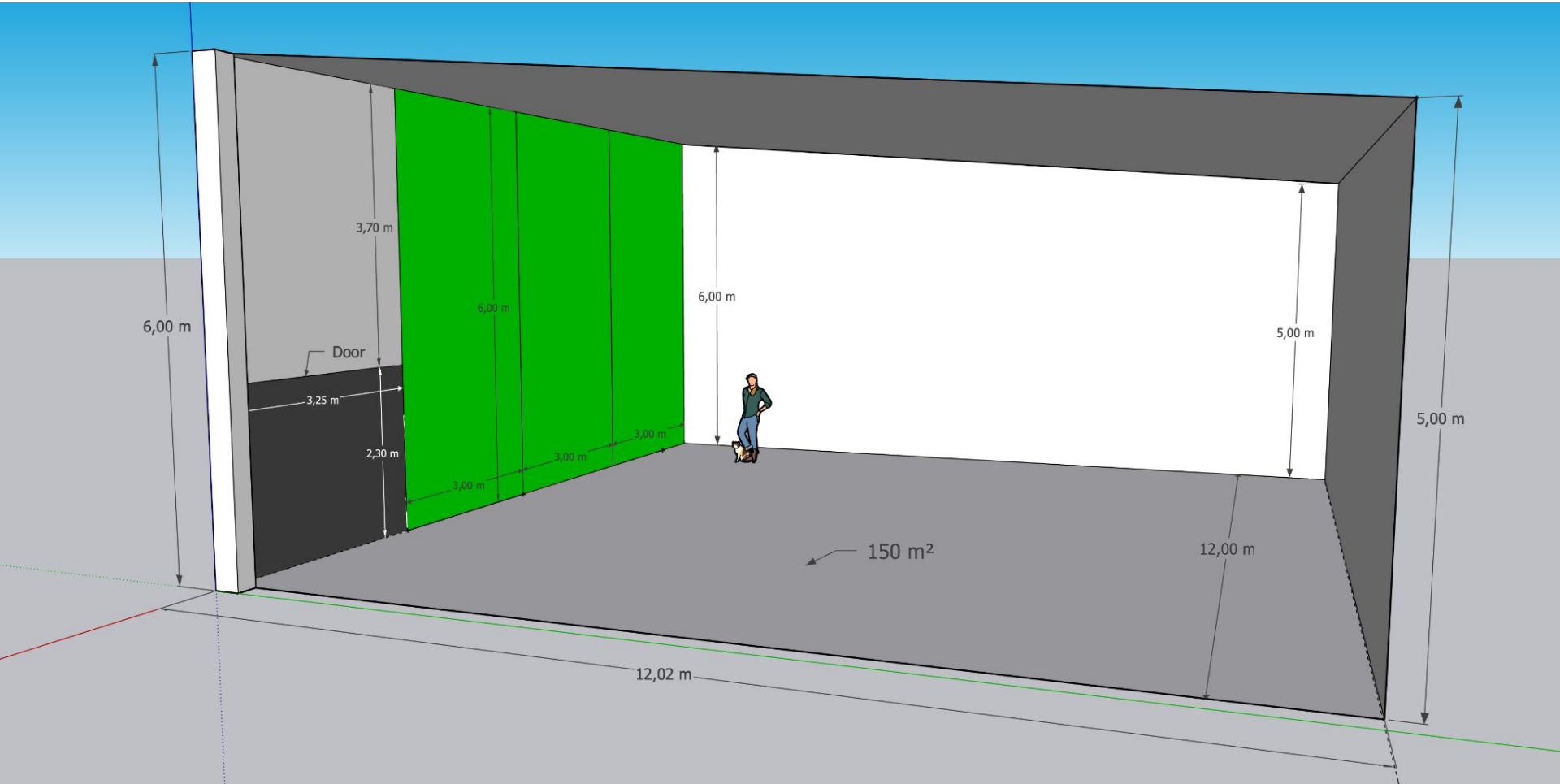
- Height - 2,30
- Width - 3,25

Green Screen

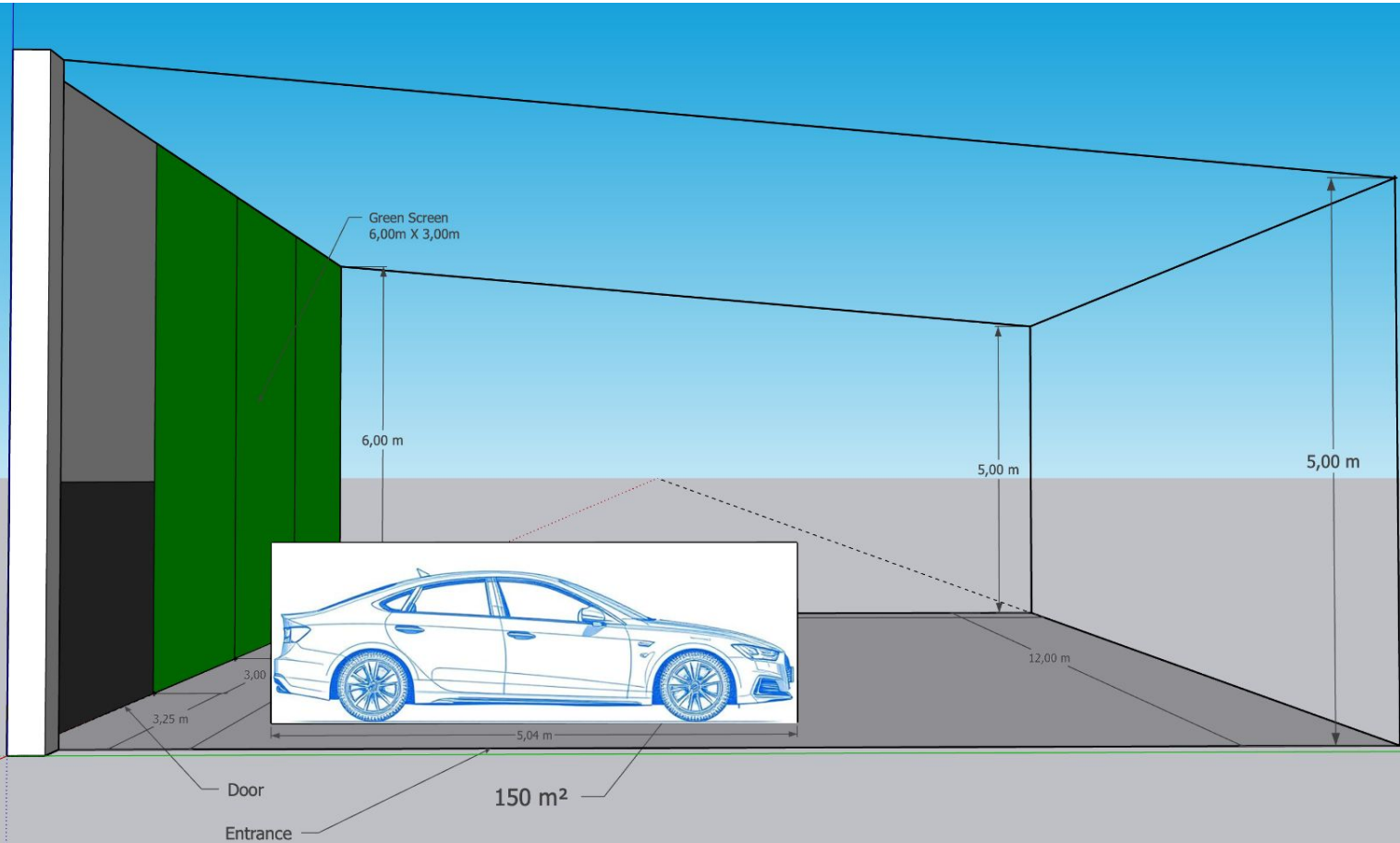
- 6,00m X 6,00



Green Screen Alignment (3D View)



Vehicle Capacity (Front View)



Gallery

